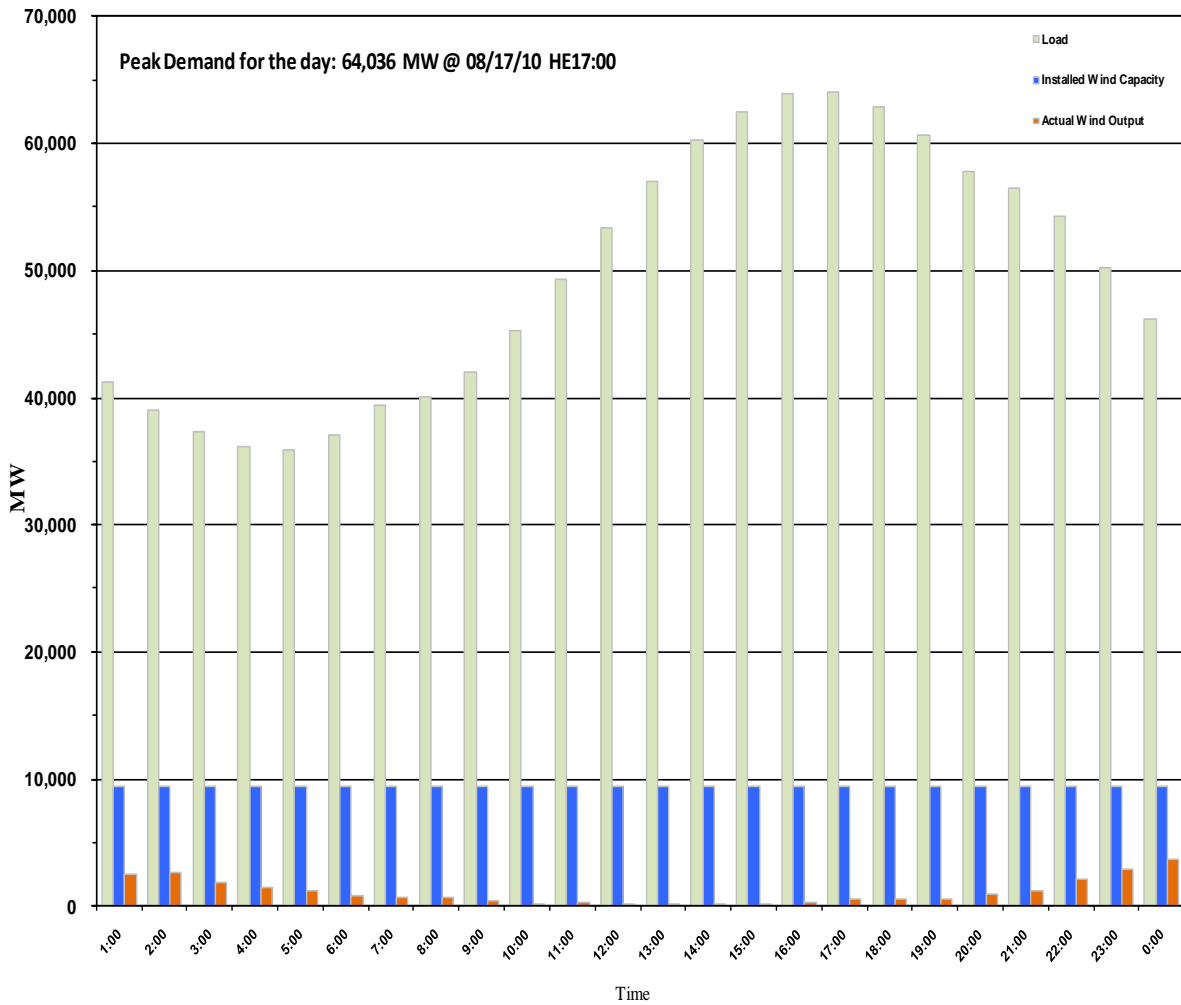




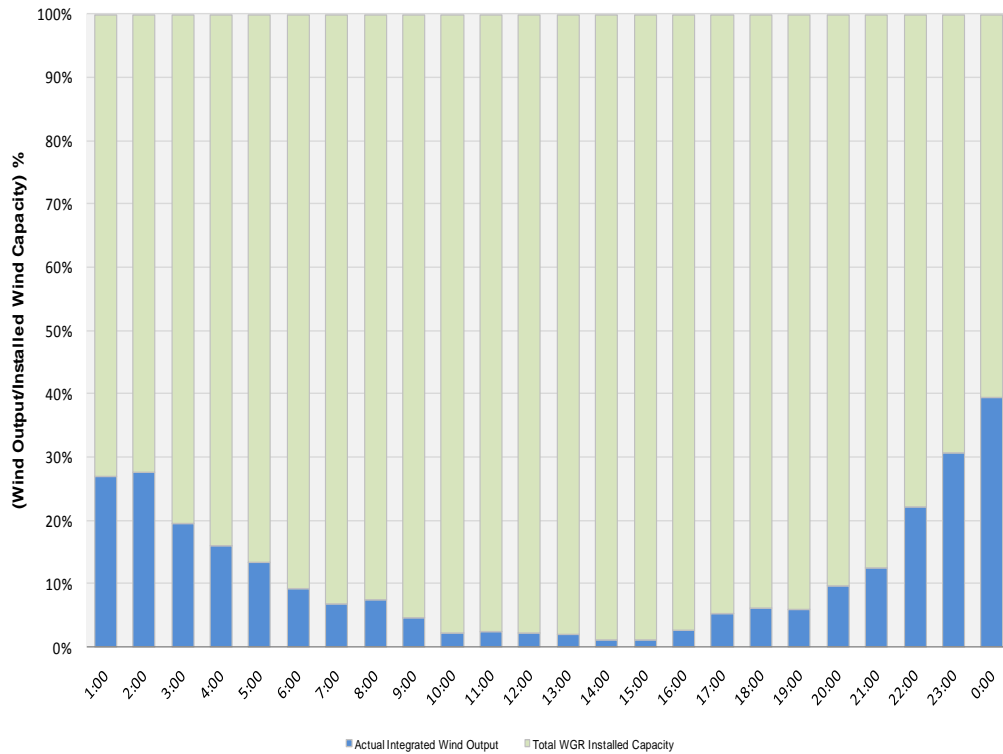
## ERCOT Grid Operations Wind Penetration Report: 08/17/10

Peak Load	<b>64,036 MW</b>
Load Peak Hour	<b>17</b>
Wind Record 06/12/10	<b>7016 MW</b>
Max Wind value	<b>3930 MW</b>
Wind Peak Hour	<b>23:47:04</b>
Wind Penetration %	<b>8.64</b>

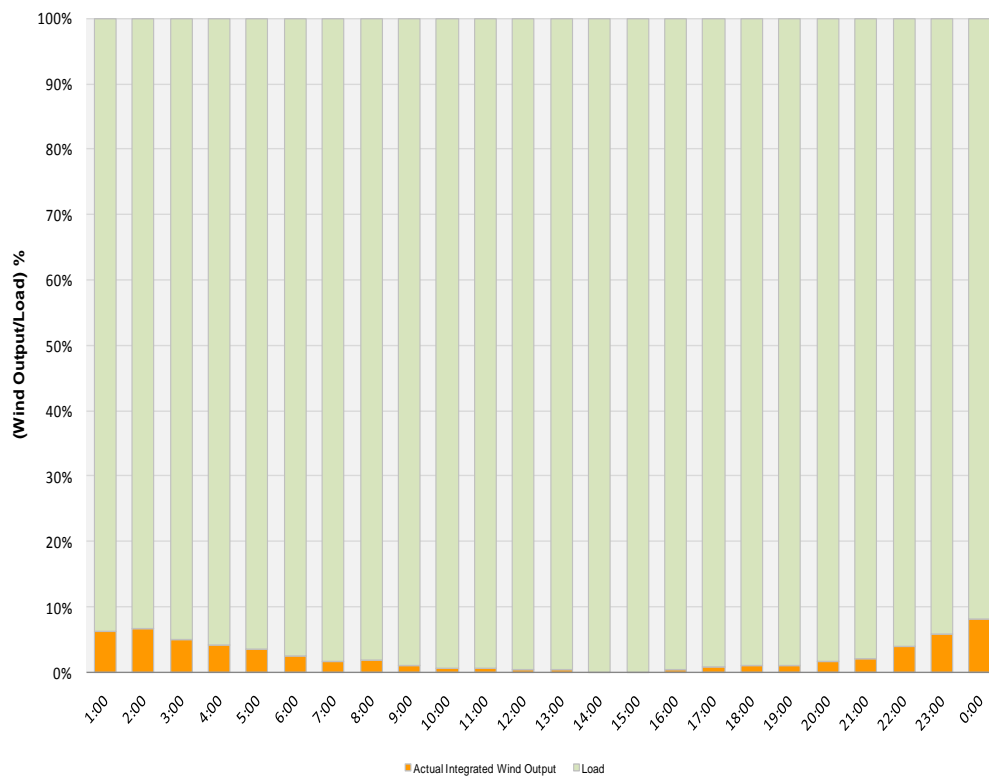




### Actual Wind Output as a Percentage of the Total Installed Wind Capacity 08/17/2010



### Actual Wind Output as a Percentage of the ERCOT Load 08/17/2010





ERCOT Load vs. Actual Wind Output 08/10/10 - 08/17/10

